

WEAVER HOMES

910.630.2100 ■ 800.892.2190

350 Wagoner Drive, Fayetteville, NC 28303



Zion

SQUARE FOOTAGE

HEATED

FIRST FLOOR	619 SQ.FT.
SECOND FLOOR	776 SQ.FT.
TOTAL	1,395 SQ.FT.

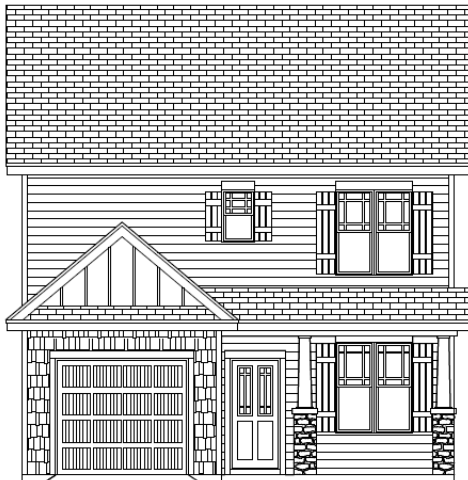
UNHEATED

GARAGE	223 SQ.FT.
COV. PORCH	25 SQ.FT.
PATIO	100 SQ.FT.
TOTAL	348 SQ.FT.

NOTE: Dimensions, Finishes and Floor Plan may be modified by Builder without notice.



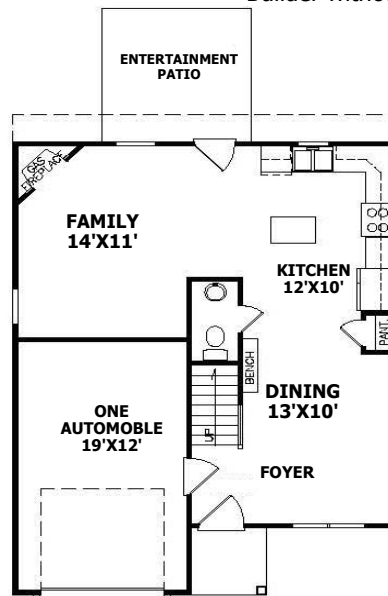
FRONT ELEVATION A



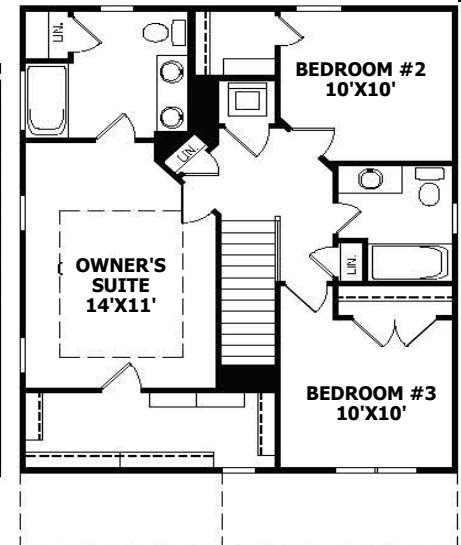
FRONT ELEVATION B



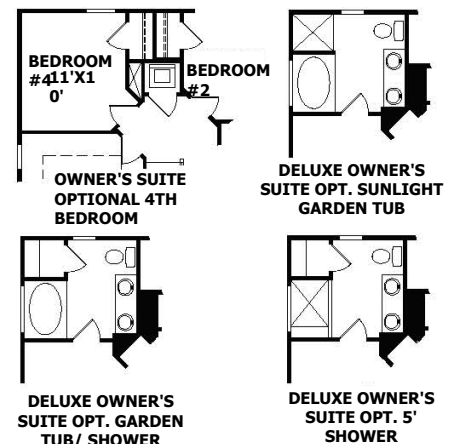
FRONT ELEVATION C



FIRST FLOOR



SECOND FLOOR



OPTIONAL

Copyright © 2019

350 Wagoner Drive, Fayetteville, NC 28303 910-630-2100