

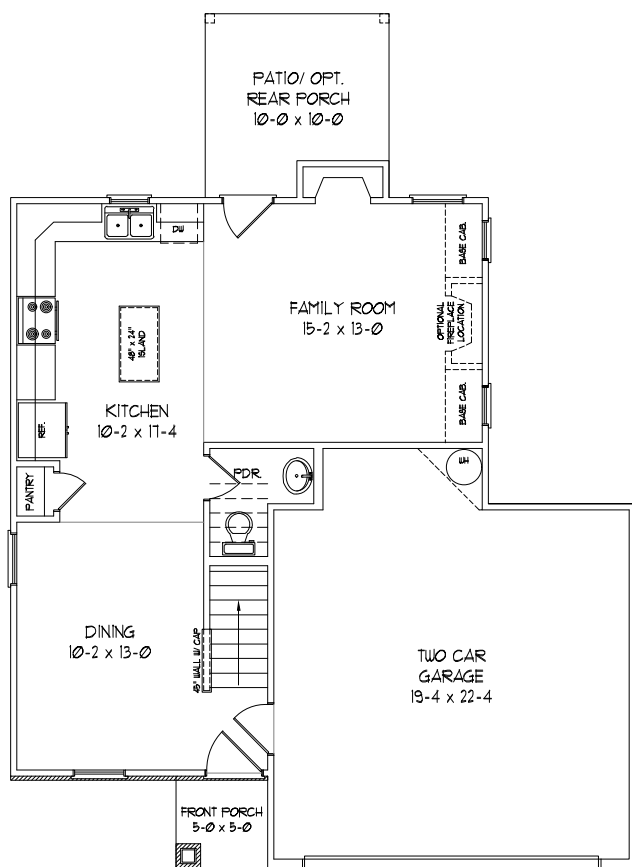


A line drawing of a two-story house. The house has a gabled roof with a smaller gable over the front entrance. The main body of the house has horizontal siding. On the left side, there is a large double window on the first floor and a smaller single window on the second floor. A stone chimney is located on the left side of the house. The front entrance features a large double garage door with multiple small rectangular windows. Above the garage door is a small decorative light fixture. The roof is covered in a pattern of small squares, representing shingles. The entire drawing is composed of black outlines on a white background.

## SQUARE FOOTAGE

**TOTAL 1405 SQ.FT.**

NOTE: Foundation, Elevation, Dimensions,  
Finishes and Floor Plan may be modified by  
Builder without notice.

[illegible]

## SECOND FLOOR