



# THE HICKORY

ELEVATION - A



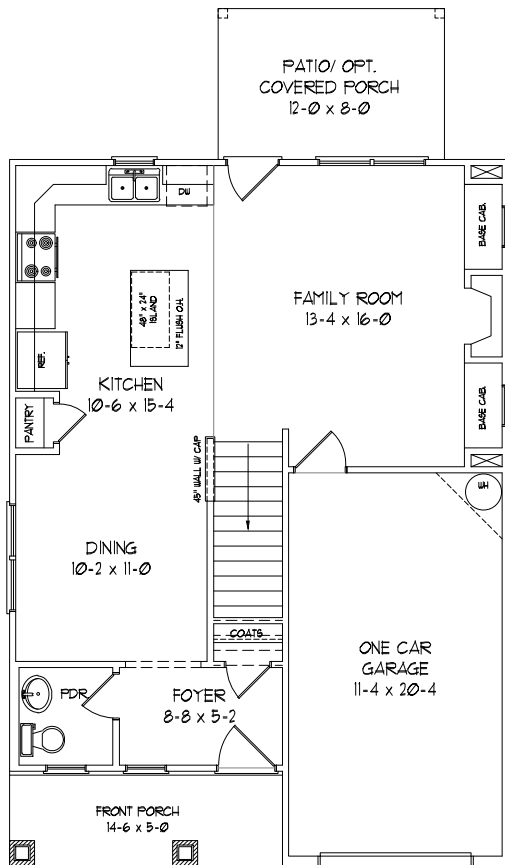
**FRONT ELEVATION**

## **SQUARE FOOTAGE**

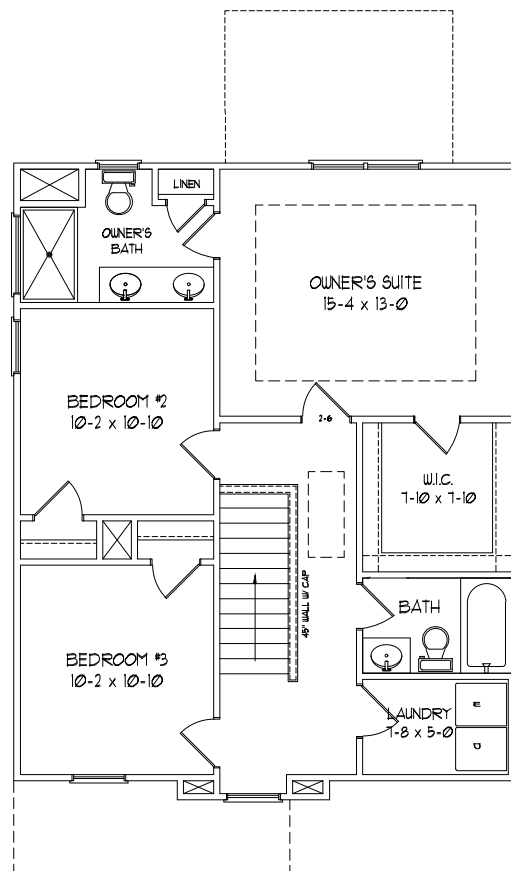
### **HEATED**

FIRST FLOOR	705 SQ.FT.
SECOND FLOOR	900 SQ.FT.
TOTAL	1605 SQ.FT.

NOTE: Foundation, Elevation, Dimensions, Finishes and Floor Plan may be modified by Builder without notice.



**FIRST FLOOR**



**SECOND FLOOR**