



## THE HICKORY

ELEVATION - B



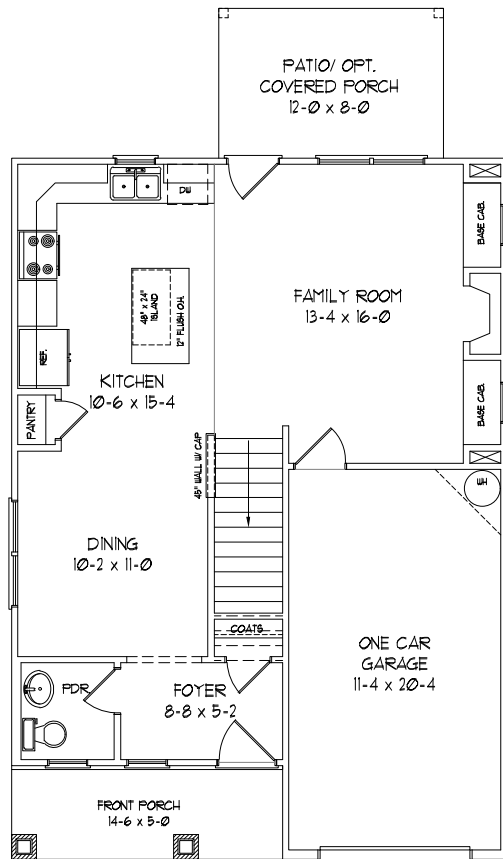
**FRONT ELEVATION**

### **SQUARE FOOTAGE**

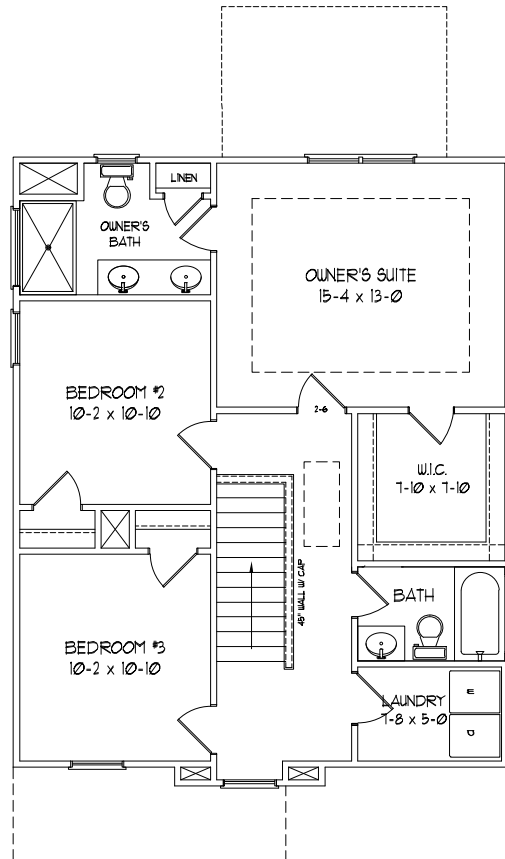
#### **HEATED**

FIRST FLOOR	705 SQ.FT.
SECOND FLOOR	900 SQ.FT.
TOTAL	1605 SQ.FT.

NOTE: Foundation, Elevation, Dimensions, Finishes and Floor Plan may be modified by Builder without notice.



**FIRST FLOOR**



**SECOND FLOOR**