

# WEAVER

## HOMES

910.630.2100 ■ 919.606.4696

350 Wagoner Drive, Fayetteville, NC 28303

# Windsor

## 150139B



### FRONT ELEVATION

Width 52 Depth 47

### SQUARE FOOTAGE

#### HEATED

FIRST FLOOR 1437 SQ.FT.

SECOND FLOOR 357 SQ.FT.

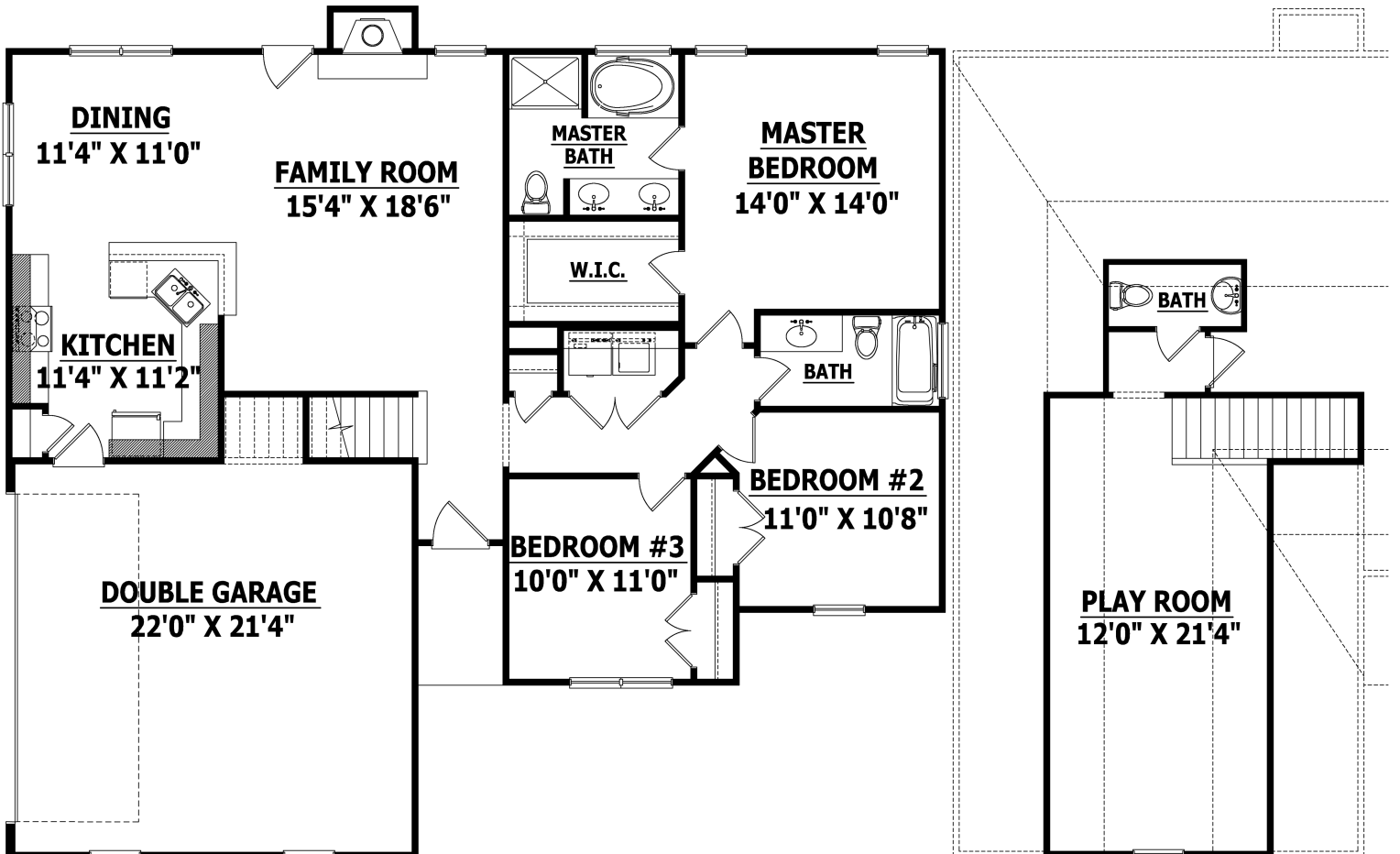
TOTAL 1794 SQ.FT.

#### UNHEATED

GARAGE 506 SQ.FT.

FRONT PORCH 36 SQ.FT.

TOTAL 542 SQ.FT.



### FIRST FLOOR

### SECOND FLOOR

Copyright © 2015 Haynes Home Plans, Inc.

350 Wagoner Drive, Fayetteville, NC 28303 910-630-2100