

# WEAVER

## HOMES

910.630.2100 ■ 919.606.4696

350 Wagoner Drive, Fayetteville, NC 28303

# Ashlyn

## 150317B



Width 54 Depth 55  
**SQUARE FOOTAGE**

### HEATED

FIRST FLOOR	1504 SQ.FT.
SECOND FLOOR	591 SQ.FT.
PLAYROOM	281 SQ.FT.
TOTAL	2376 SQ.FT.

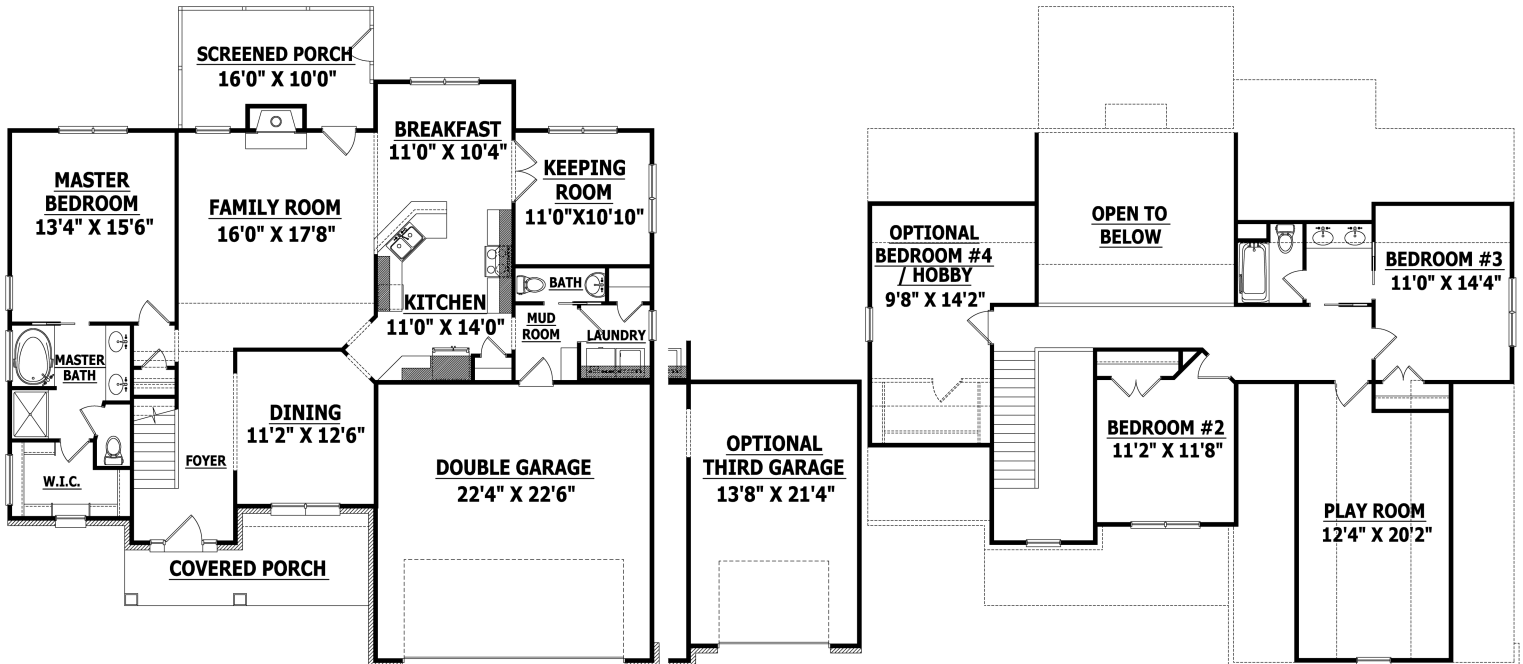
### OPTIONAL

<b>OPT. BED4/HOBB</b>	<b>237 SQ.FT.</b>
TOTAL	237 SQ.FT.

### UNHEATED

GARAGE	521 SQ.FT.
FRONT PORCH	123 SQ.FT.
SCREENED PORC	150 SQ.FT.
OPT. THIRD GAR	308 SQ.FT.
TOTAL	1102 SQ.FT.

## FRONT ELEVATION



## FIRST FLOOR

## SECOND FLOOR

Copyright © 2015 Haynes Home Plans, Inc.

350 Wagoner Drive, Fayetteville, NC 28303 910-630-2100