

WEAVER

HOMES

910.630.2100 ■ 919.606.4696

350 Wagoner Drive, Fayetteville, NC 28303

Jamestown

141114B

Width 63 Depth 52

SQUARE FOOTAGE

HEATED

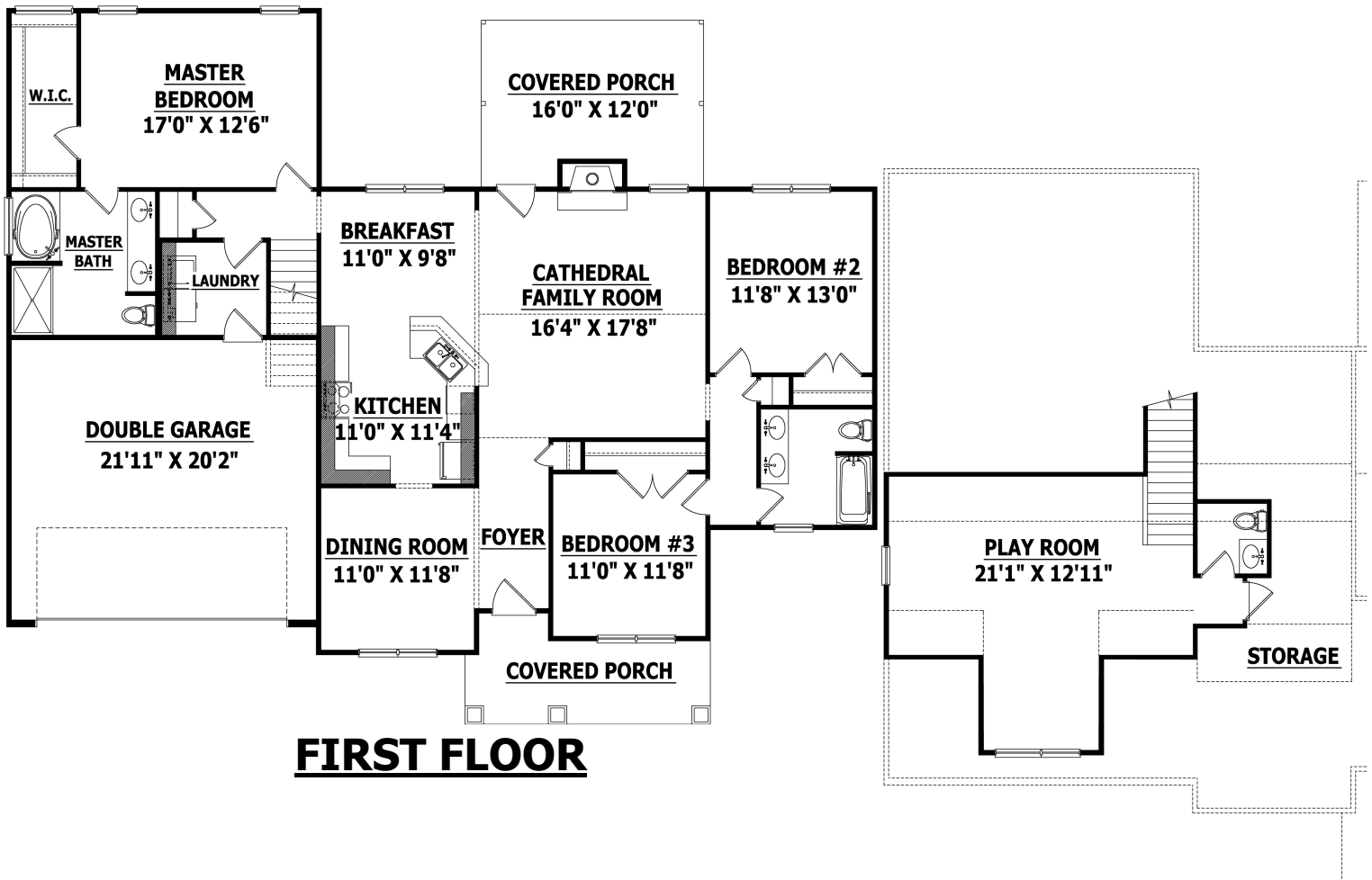
FIRST FLOOR	1760 SQ.FT.
SECOND FLOOR	382 SQ.FT.
TOTAL	2142 SQ.FT.

UNHEATED

FRONT PORCH	115 SQ.FT.
GARAGE	461 SQ.FT.
REAR PORCH	182 SQ.FT.
TOTAL	758 SQ.FT.



FRONT ELEVATION



FIRST FLOOR

SECOND FLOOR

Copyright © 2014 Haynes Home Plans, Inc.

350 Wagoner Drive, Fayetteville, NC 28303 910-630-2100