

Gaston II

170504B



FRONT ELEVATION

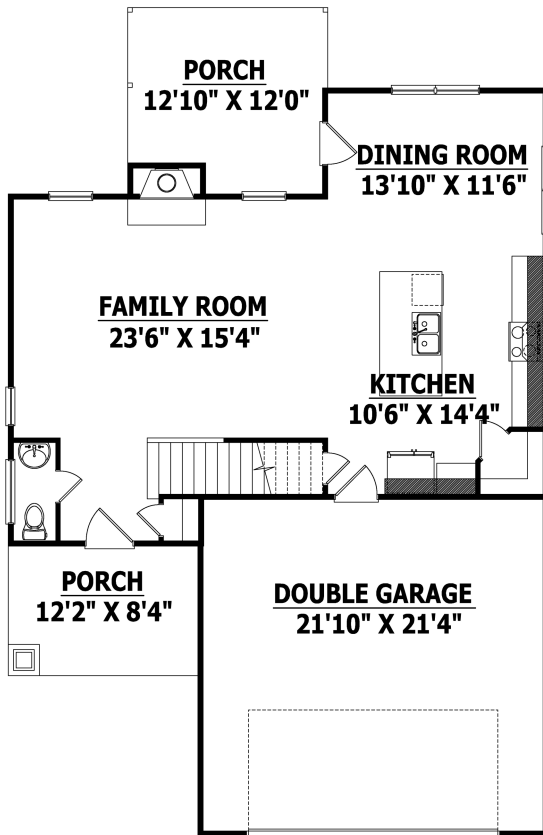
Width 35 Depth 54
SQUARE FOOTAGE

HEATED

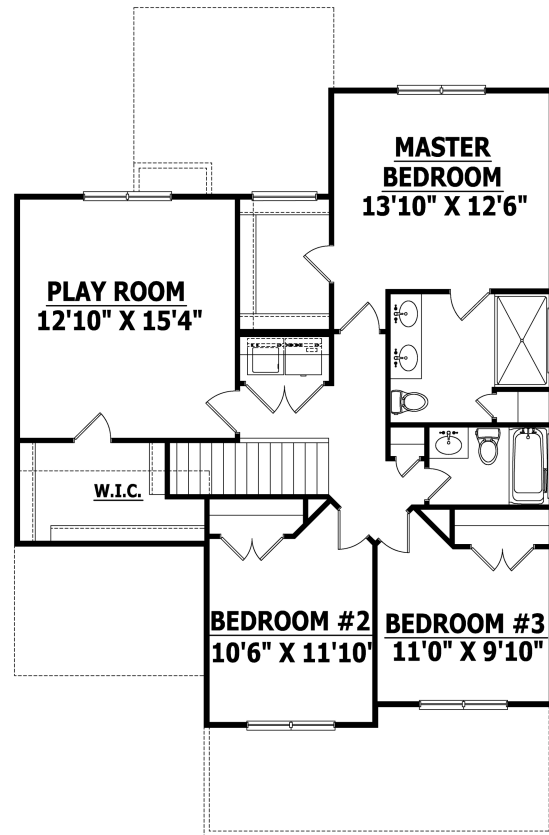
FIRST FLOOR	818 SQ.FT.
SECOND FLOOR	798 SQ.FT.
PLAYROOM	296 SQ.FT.
TOTAL	1912 SQ.FT.

UNHEATED

FRONT PORCH	101 SQ.FT.
GARAGE	487 SQ.FT.
REAR PORCH	142 SQ.FT.
TOTAL	730 SQ.FT.



FIRST FLOOR



SECOND FLOOR