

WEAVER

HOMES

910.630.2100 ■ 919.606.4696

350 Wagoner Drive, Fayetteville, NC 28303

Windsor

150139B



FRONT ELEVATION

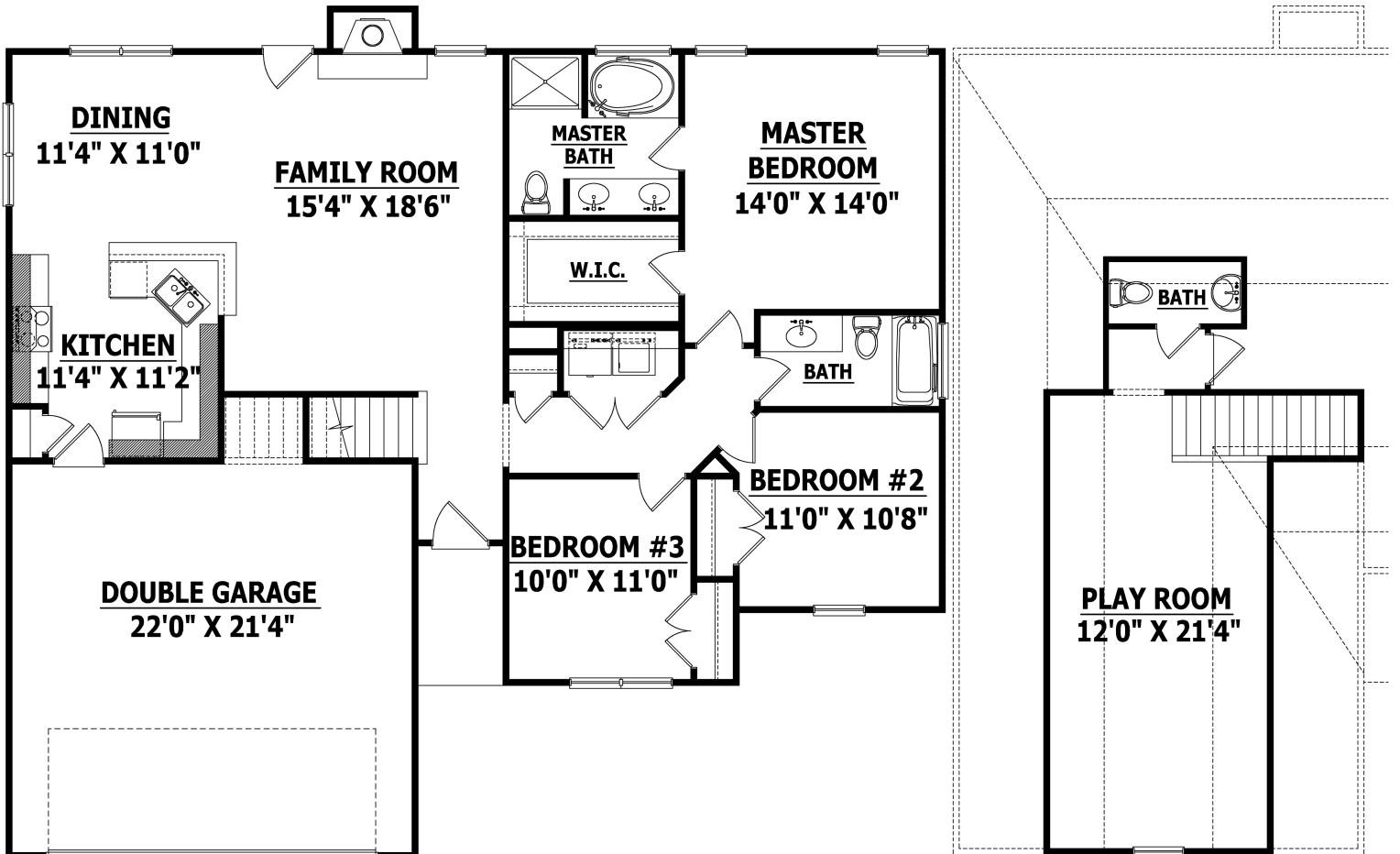
Width 52 Depth 47
SQUARE FOOTAGE

HEATED

FIRST FLOOR 1437 SQ.FT.
SECOND FLOOR 357 SQ.FT.
TOTAL 1794 SQ.FT.

UNHEATED

GARAGE 506 SQ.FT.
FRONT PORCH 36 SQ.FT.
TOTAL 542 SQ.FT.



FIRST FLOOR

SECOND FLOOR

Copyright © 2015 Haynes Home Plans, Inc.

350 Wagoner Drive, Fayetteville, NC 28303 910-630-2100