

# WEAVER

## HOMES

910.630.2100 ■ 919.606.4696

350 Wagoner Drive, Fayetteville, NC 28303

# Windsor

## 150139B



### FRONT ELEVATION

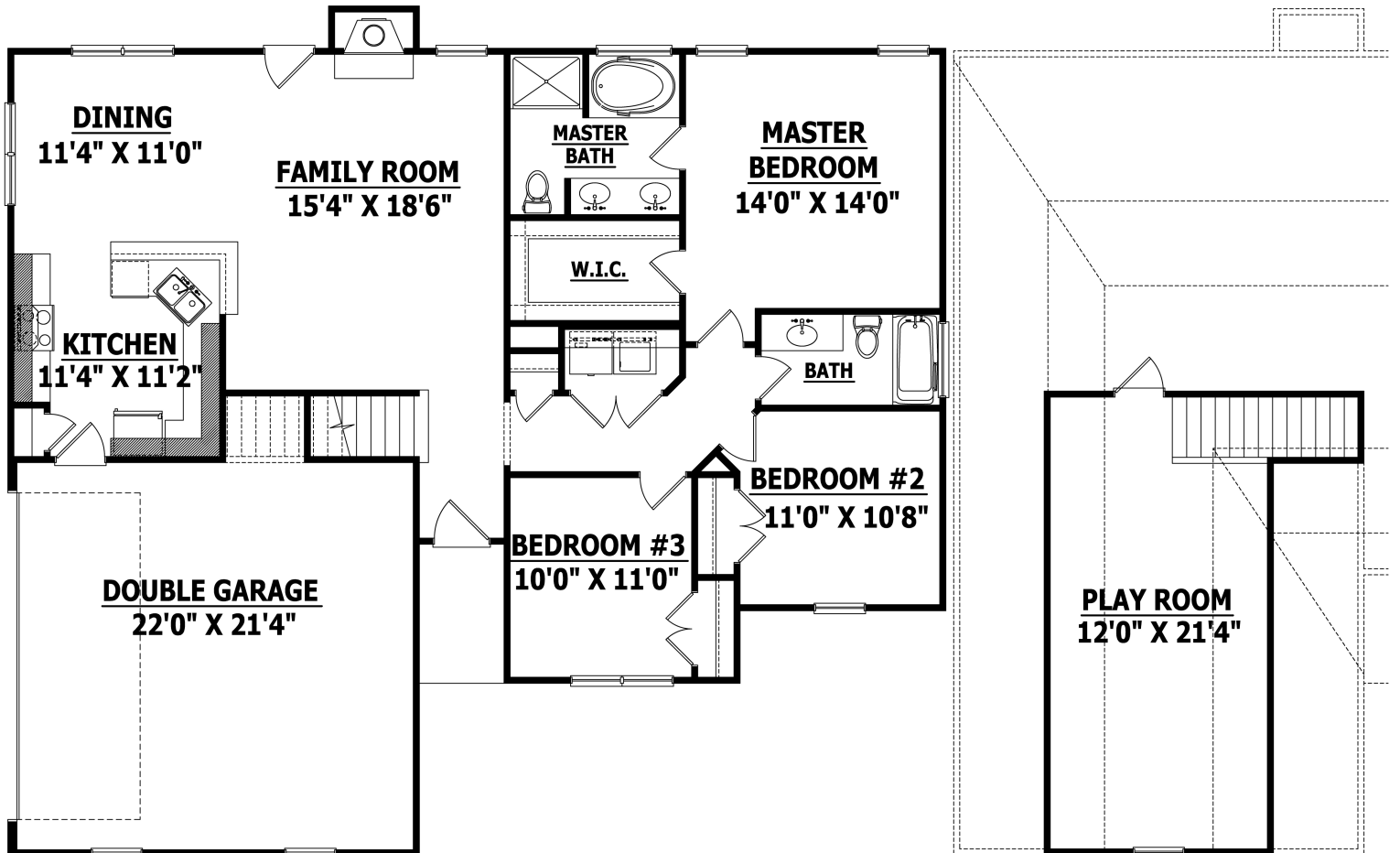
Width 52 Depth 47  
**SQUARE FOOTAGE**

#### HEATED

FIRST FLOOR 1437 SQ.FT.  
SECOND FLOOR 305 SQ.FT.  
TOTAL 1742 SQ.FT.

#### UNHEATED

GARAGE 506 SQ.FT.  
FRONT PORCH 36 SQ.FT.  
TOTAL 542 SQ.FT.



### FIRST FLOOR

### SECOND FLOOR

Copyright © 2015 Haynes Home Plans, Inc.

350 Wagoner Drive, Fayetteville, NC 28303 910-630-2100