

WEAVER

HOMES

910.630.2100 ■ 919.606.4696

350 Wagoner Drive, Fayetteville, NC 28303

Rand-A

151106B



Width 38 Depth 50
SQUARE FOOTAGE

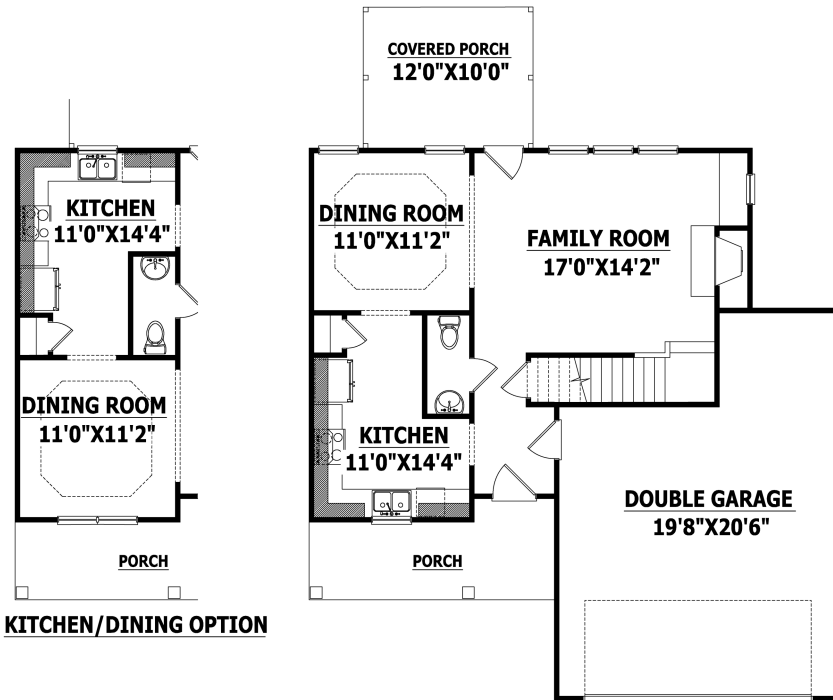
HEATED

FIRST FLOOR 693 SQ.FT.
SECOND FLOOR 836 SQ.FT.
TOTAL 1529 SQ.FT.

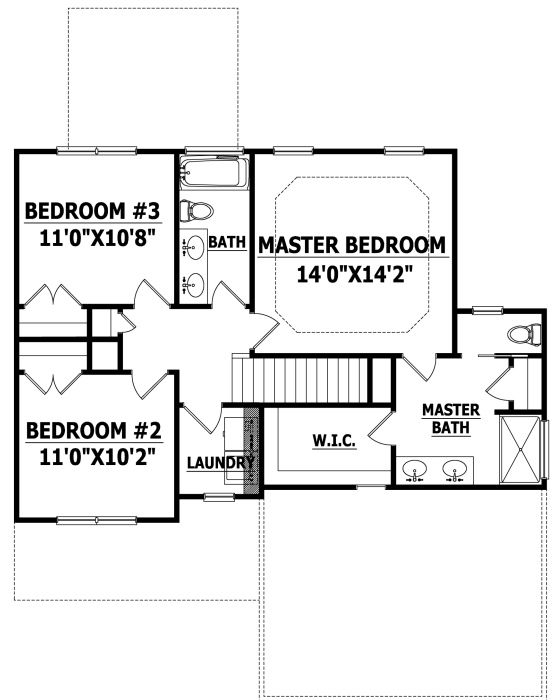
UNHEATED

GARAGE 481 SQ.FT.
FRONT PORCH 105 SQ.FT.
COVERED PORCH 120 SQ.FT.
TOTAL 706 SQ.FT.

FRONT ELEVATION



FIRST FLOOR



SECOND FLOOR

Copyright © 2015 Haynes Home Plans, Inc.

350 Wagoner Drive, Fayetteville, NC 28303 910-630-2100